

No. 6
8th November 2022

THE Grapevine

SUPPLEMENT

IT'S BACK ... OH YES IT IS!

Stockcross Panto Players present

Dick Turpin

Thursday 1st, Friday 2nd and Saturday 3rd
December 2022

Sutton Hall, Church Road, Stockcross
Doors & Bar open 7pm, Curtain up 7:30pm



Tickets Thursday - £6, Friday & Saturday - £7

Available from
Stockcross Village Store & Post Office
www.jumblebee.co.uk/panto2022
or scan the QR code



Ticket Sales and Bar in aid of village hall
and future village events

The Stockcross Panto is put together by the village for the
local community - you the audience complete our show and
we can't wait to see and hear you!

IT'S BACK ... OH YES IT IS!

Stockcross Panto Players present

Dick Turpin

Thursday 1st, Friday 2nd and Saturday 3rd
December 2022

Sutton Hall, Church Road, Stockcross
Doors & Bar open 7pm, Curtain up 7:30pm



Tickets Thursday - £6, Friday & Saturday - £7

Available from
Stockcross Village Store & Post Office
www.jumblebee.co.uk/panto2022
or scan the QR code

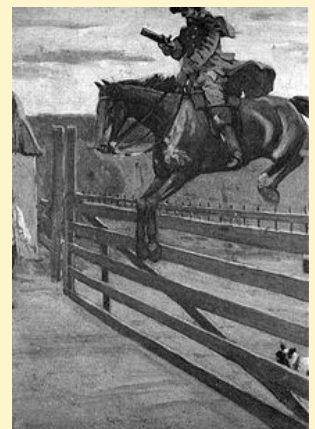
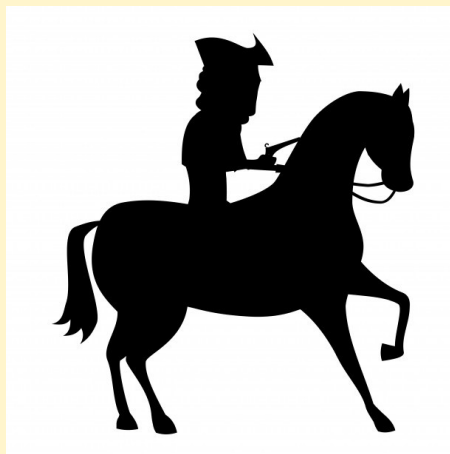
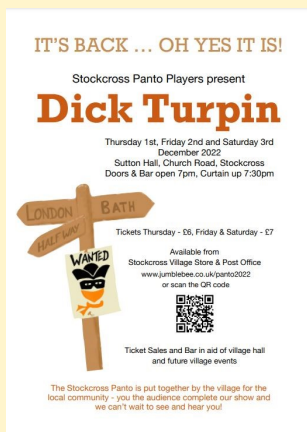


Ticket Sales and Bar in aid of village hall
and future village events

The Stockcross Panto is put together by the village for the
local community - you the audience complete our show and
we can't wait to see and hear you!



The tickets are now on sale for the Panto from
this link: <https://www.jumblebee.co.uk/panto2022> or from the Post Office.



Support Sutton Hall

Shop at smile.amazon.co.uk and we'll donate to your favourite charitable organisation, at **no cost to you**.

Start shopping

Pick a different charity

Amazon donates 0.5% of the price of eligible purchases.



Hi everyone, the hall has been invited to participate in the Amazon smile programme. This means that the hall will receive a donation from Amazon every time someone makes a purchase through smile.amazon.co.uk (this has the same product range and prices as the main amazon website) When making a purchase just select Sutton Hall from the list of charities and make your purchase as usual . Please see the link below

<https://smile.amazon.co.uk/ch/1071688-0>

So, if you are shopping on Amazon please do it through [Smile.amazon.co.uk](https://smile.amazon.co.uk) - you will be helping the hall .



Opening hours of the Post Office

Monday 07:30 - 18:00
Tuesday 07:30 - 18:00
Wednesday 07:30-20:00
Thursday 07:30 - 18:00
Friday 07:30 -20:00
Saturday 08:00-14:00
Sunday -closed



We also serve special cakes, some gluten-free, some vegan, and homemade sandwiches, such as bagels, brioche, panini, and various soups. People are welcome to sit in and enjoy coffee and the nice atmosphere etc.

Regarding the Post Office

It will definitely not close permanently; it's just closed for a short period until Sigal and myself can get our training done. Sorry for any inconvenience.
Peter Davies.

WINE TASTING



We have a few tickets left for the Wine Tasting on 11th November.
To purchase visit <https://www.jumblebee.co.uk/cheesewine>

YOU'RE INVITED TO OUR
FREE

CHRISTMAS DRINKS

18 DECEMBER, 2022
6.30 PM
SUTTON HALL, STOCKCROSS

MULLED WINE, HOT DOGS, MINCE PIES
COME AND SHOW OFF YOUR CHRISTMAS SWEATERS AND
SAY HI TO NEIGHBOURS & FRIENDS
OPEN TO ALL PEOPLE WHO LIVE IN
STOCKCROSS AND SURROUNDING AREAS

STOCKCROSS CE (VA) PRIMARY SCHOOL
"Where the children come first"

**2022/23
OPEN DAYS**
Take a tour
Meet our passionate team
Explore our beautiful grounds
Call to book: 01488 608356

Why choose our school?

- Joining Stockcross means becoming part of a close-knit community of passionate staff, families & governors.
- With just 15 places in reception, staff are able to get to know, support and nurture each individual child.
- We provide a stimulating and enriching curriculum, including our Scouting initiative on Friday afternoons and extra-curricular music, sports & craft clubs.
- Wrap around care includes access to: Breakfast club (at our partner school) Orsted Outstanding after-school "Grove Club"

Open Days:

- Monday 14th November 9am
- Thursday 12th January 2023 9am

How to find us:
We're situated in the beautiful village of Stockcross, less than 10 minutes from Newbury and Hungerford.
Address: Chapel Road, Stockcross, RG20 8LD.
Website: www.stockcrossschool.org.uk
Email: office@stockcrossce-berks.sch.uk

Proudly part of the Eton Primary Federation "Flying High Together"

SUTTON HALL, STOCKCROSS

Become A Friend Of The Sutton Hall

We're looking for volunteers who can help with running events. This might be setting up the Pop Inn, doing a shift behind the bar or distributing leaflets.

If you can spare a hour or two to help the Committee so we can run more frequent events, please get in touch.

suttonhall642@btinternet.com

